



epa news brief

The Engineering Professions Association of
Namibia - December 2011



Merry
Xmas

Dear
members
we wish you
all a Merry
Christmas
and a
Prosperous
2012.



Happy
2012



Academic calendar 2012 Government Schools

1.
2012 - 01 - 17 - 2012 - 04 - 25
2.
2012 - 05 - 29 - 2012 - 08 - 22
3.
2012 - 09 - 05 - 2012 - 12 - 04



The office of the EPA
will be closed from
19 December 2011 to
9 January 2012

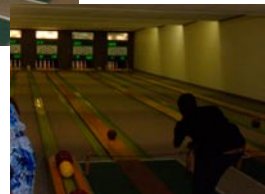
EPA Indoor Bowls Day 11 November 2011 - held at
SKW Indoor Skittles Range - Congratulations to the
winners of the evening and a big Thank You goes to
Ralf and Joerg who assisted the players.....!

School Holidays 2011/2012 Government Schools

- 2011 - 12 - 08 - 2012 - 01 - 15
- 2012 - 04 - 26 - 2012 - 05 - 28
- 2012 - 08 - 23 - 2012 - 09 - 04
- 2012 - 12 - 05 - 2013 - 01 - 14

PUBLIC HOLIDAYS IN NAMIBIA 2012

- 01. January New Years Day
- 02. January Public Holiday
- 21. March Independence Day
- 06. April Good Friday
- 08. April Easter Sunday
- 09. April Easter Monday
- 01. May Worker's Day
- 04. May Cassinga Day
- 17. May Ascension Day
- 25. May Africa Day
- 26. August Heroes' Day
- 10. December Human Rights Day
- 25. December Christmas Day
- 26. December Family Day





The Engineering Professions Association of Namibia

PO Box 21885 • Windhoek • Namibia • Tel/Fax: +264-61-223009
Website: www.engineers-namibia.org / E-mail: epa@africaonline.com.na

7 November 2011

All EPA members

NOTICE OF MEDICAL AID BENEFIT

We are extremely excited and take this opportunity to introduce to you a new medical aid group benefit which we have been working on for some time.

Prosperity Health Namibia has established an umbrella group named: Namibia Professionals Association (NPA) under which the following Associations / Institutes can register their members and enjoy the group rate benefit:

Engineering Professions Association of Namibia
Namibia Institute of Architects
GWATIN

In order to enjoy this new and exciting benefit of being an EPA member, please take note of the requirements set out by Prosperity Health for your application and registration and also note that you do require a letter from the EPA Administrator confirming your membership in which your category is registered. Also, please note that you have to apply for the group: NPA which will be controlled and administered by the EPA office in order to ensure correct rates and benefits.

Should you wish to make use of this benefit, please advise the EPA Administrator and we will e-mail you the contribution tables and Renaissance Brochure with application form for your perusal. If you then want to make use of this opportunity, kindly contact the Office Administrator, Tanja Bednarek, epa@africaonline.com.na. Please send us your full names and identity numbers, dates of birth to complete the membership confirmation letter. For any further queries, you can also contact the group administrator, Duan Jansen at Prosperity Health at following details: Tel: 061-299 9725 or duan.jansen@na.prosperityhealth.com and refer to NPA umbrella group for the EPA.

Kind regards

Sophia Belete Tekie
EPA President

... the earth-scraper: Architects design 65-storey building which plunges 300 metres below ground

Architects have designed an incredible 65-storey 'earth-scraper' which plunges 300 metres below ground. The stunning upside down pyramid in the middle of Mexico City is designed to get around height limits on new buildings in the capital. The subterranean building will have 10 storeys each for homes, shops and a museum, as well as 35 storeys for offices.

Deep: The 65-storey 'earth-scraper' is set to plunge 300m into the ground beneath Mexico City

Epic scale: The enormous complex is intended to get round the city's planning laws, which state that buildings can be no more than eight storeys high

Landmark: The earth-scraper would be located in the city's main square, and topped with an enormous Mexican flag. A glass floor covers the massive 240m x 240m hole in the city's main square to filter in natural light from the world above.

The design has been crowned with a Mexican flag. Esteban Suarez, from architecture firm BNKR Arquitectura, said the building would also house a new cultural centre.

Scary: The core is all made of glass to ensure that all parts of the building receive natural sunlight from the world outside

Relaxing: Designers expect the public areas of the building to become a popular destination for those wishing to escape the bustle of the city

Heritage: The earth-scraper is expected to contain a museum and cultural centre which will explore the history of Mexico and its pyramids

He said: 'New infrastructure, office, retail and living space are required in the city but no empty plots are available. Federal and local laws prohibit demolishing historic buildings and even if this was so, height regulations limit new structures to eight storeys.'

'The city's historic centre is in desperate need of a makeover but we have nowhere to put it, this means the only way to go is down.'

He added: 'The Earthscraper preserves the iconic presence of the city square and the existing hierarchy of the buildings that surround it.'

'It is an inverted pyramid with a central void to allow all habitable spaces to enjoy natural lighting and ventilation. It will also allow the numerous activities that take place on the city square year round such as concerts, open-air exhibitions and military parades to go ahead.'

Unobtrusive: One advantage of the unusual structure is that it would create space in the centre of Mexico City, which is full of historic buildings which cannot be demolished

Green: The interior of the building is supposed to look natural and welcoming

Efficient: The creative use of space would allow the plaza to be used for events such as concerts and military parades

Massive: The space covering the earth-scraper will take up 240 square metres in the heart of Mexico's capital. Pyramids play a large part in the architectural history of Mexico, as the country's ancient civilisations have often built huge pyramid structures.

When the Aztecs first came into the Valley of Mexico they built their pyramids on the lake they found there.

As the Aztec Empire grew in size and power they conceived a new and bigger pyramid, but instead of looking for a new site they just built it on and around the existing one.

The traditional pyramids are therefore composed of different layers of historical periods.

Modern: Much of the building is expected to be devoted to office space

Shopping: The earth-scraper would almost certainly become one of the city's top retail destinations as soon as it opened

Connected: This picture shows the proposed metro station which would pass through the earth-scraper just below ground level

When the Spanish arrived in America and ultimately conquered the Aztecs, they erected Christian churches on top of the pyramids.

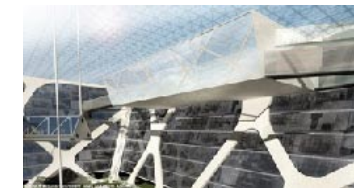
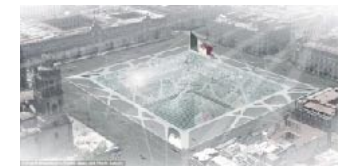
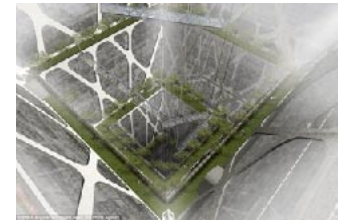
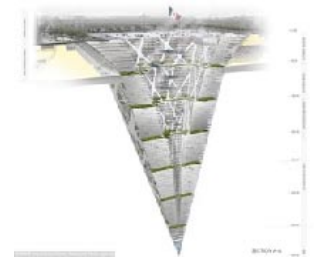
Eventually their whole colonial city was built over the Aztec one. In the 20th century, many colonial buildings were demolished and modern structures raised on the existing historic foundations.

Esteban added: 'The Earthscraper digs down through the layers of cities to uncover our roots.'

Novelty: No other public building extends so far beneath the ground

Technical: The building would be an extraordinary feat of engineering

Kindly contributed by Nina Maritz Architects

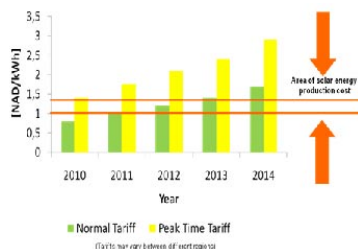


Photovoltaic Solar Power Plants - REDUCE YOUR ELECTRICITY COSTS !

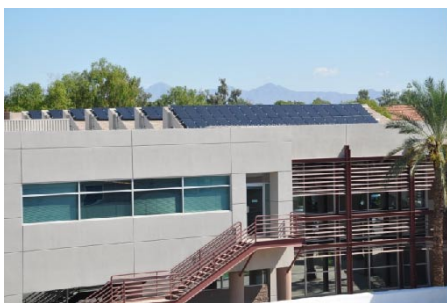
Welcome to a new era in affordable solar systems for industrial and residential applications

Electricity costs in Windhoek saw recently a significant increase. Further price increases for the years ahead are already in the pipeline. It is not a secret that electricity costs may double within the next 5 years! But there is a solution available already now.

HopSol's grid connected photovoltaic solar power installations on the roof of your premises will produce your own electricity in the time over the day when the most of electricity is needed. Therefore you may pay less during peak time. At night you use cheap electricity (night tariff) from the grid. HopSol Solar Power Plants produce electricity at the costs that are equal or below the present public electricity prices (calculations done on the basis of 10 years depreciation).



HopSol has specialized on solutions for desert regions. We provide installations that perform best under these extreme climatic conditions. Therefore the above mentioned results are possible. For our installations we use the highest quality brands from Germany and Japan. You will be provided with a 20 year performance guarantee on our solar modules. Above these our installations are of an outstanding aesthetic look.



Innovative Photovoltaic Generator for Desert Regions - Due to the specific climatic conditions as they are in desert regions the selection of the right technology is decisive in order to ensure an outstanding performance of investments in solar power installations. Our intention is to provide clients with the latest updated ecological and economical solar energy solutions.

HopSol trusts in CIS Technology made by Solar Frontier! CIS modules have the following product features:

CIS modules produce more electricity in kWh (5 – 10% over lifetime) per installed capacity (kWp) compared to mono- and polycrystalline modules („Light Soaking Effect“).

Ideal product for climatic conditions in desert regions because of low temperature coefficient – Solar Frontier CIS modules handle higher temperatures significantly better than crystalline modules.

Very competitive pricing because of efficient production process in high automated Giga-Watt-Plant (one of the largest PV production sites in the world).

Free of cadmium and lead – most ecological PV solution.

High Quality Brand made in Japan by Solar Frontier (Showa Shell Group) with 20 years performance guarantee.

The resulting formula is straight forward: YOU GET MORE ELECTRICITY (kWh) FOR LESS MONEY !!!

With its experts Swiss HopSol group concentrates on building photovoltaic power plants in desert regions (EPC service). HopSol acts also as a wholesaler for all the components of solar power installations. With HopSol Africa (Pty) Ltd in Namibia and HopSol SA (Pty) Ltd in South Africa at large HopSol has established strong local teams to realize projects all over southern Africa. Fully equipped local warehouses and outstanding function in the distribution network enable HopSol to provide best services to all customers in southern Africa.

HopSol Africa (Pty) Ltd / Bjoern Wilschke, CEO / 5 Von Braun Street / Windhoek
 Phone 061 371 185 / Email bjoern.wilschke@hopsol.com

www.HopSol.com





INTERNATIONAL COST ENGINEERING COUNCIL

8th WORLD CONGRESS

23-27 June 2012: ICC Durban, South Africa

"Quest for Quality – Professionalism in Practice"

www.icec2012.org.za

An invitation to attend ICEC 2012

We look forward to welcoming you to the forthcoming ICEC 8th World Congress held in South Africa during June 2012. The host city is Durban, situated in the KwaZulu-Natal Province - a seaside resort known as the 'holiday playground' of the region.

Building on previous successful congresses, the program aims to foster international exchange and friendship in the pursuit of promoting excellence in professional practice within the built environment. You will discover a lively intellectual exchange in a relaxed and informal atmosphere.

Meet practitioners from around the world in a 3-day program that will include keynote talks to highlight some of the major developments in our field in recent years, together with poster and small group sessions to foster debate amongst participants.

The conference venue, whilst displaying a distinctly African vibe, is one of the most advanced conference facilities in the world. We also hope that our guests take the opportunity to explore the neighboring areas and enjoy the culturally rich society, fascinating local history, and excellent dining and leisure opportunities available. We encourage you to branch out and to visit the awe-inspiring Drakensberg mountain range; a vast selection of sun-washed beaches; brilliant coral reefs of the Indian Ocean; and to feel the excitement of seeing the 'Big 5' in the ultimate wildlife experience - all within a short distance of Durban.

So whether old hand or new, we look forward to seeing you at "ICEC 2012"

Rob Pearl
Congress Director

To register - contact:
Dudley Randall | Gill Slaughter
Turners Conferences and Conventions (Pty) Ltd
PO Box 1935, Durban 4000, South Africa
Tel: + 27 31 368 8000
Fax: + 27 31 368 6623
E-mail: DudleyR@turnergroup.co.za | GillS@turnergroup.co.za
Web: www.icec2012.org.za